

STATE	PROJECT NO.	SHEET NO.	TOTAL SHEETS
N.C.	2023CPT.10.13.20901	1	
F.A. PROJECT NO.			



ENLARGED MUNICIPAL AND SUBURBAN AREAS

UNION COUNTY

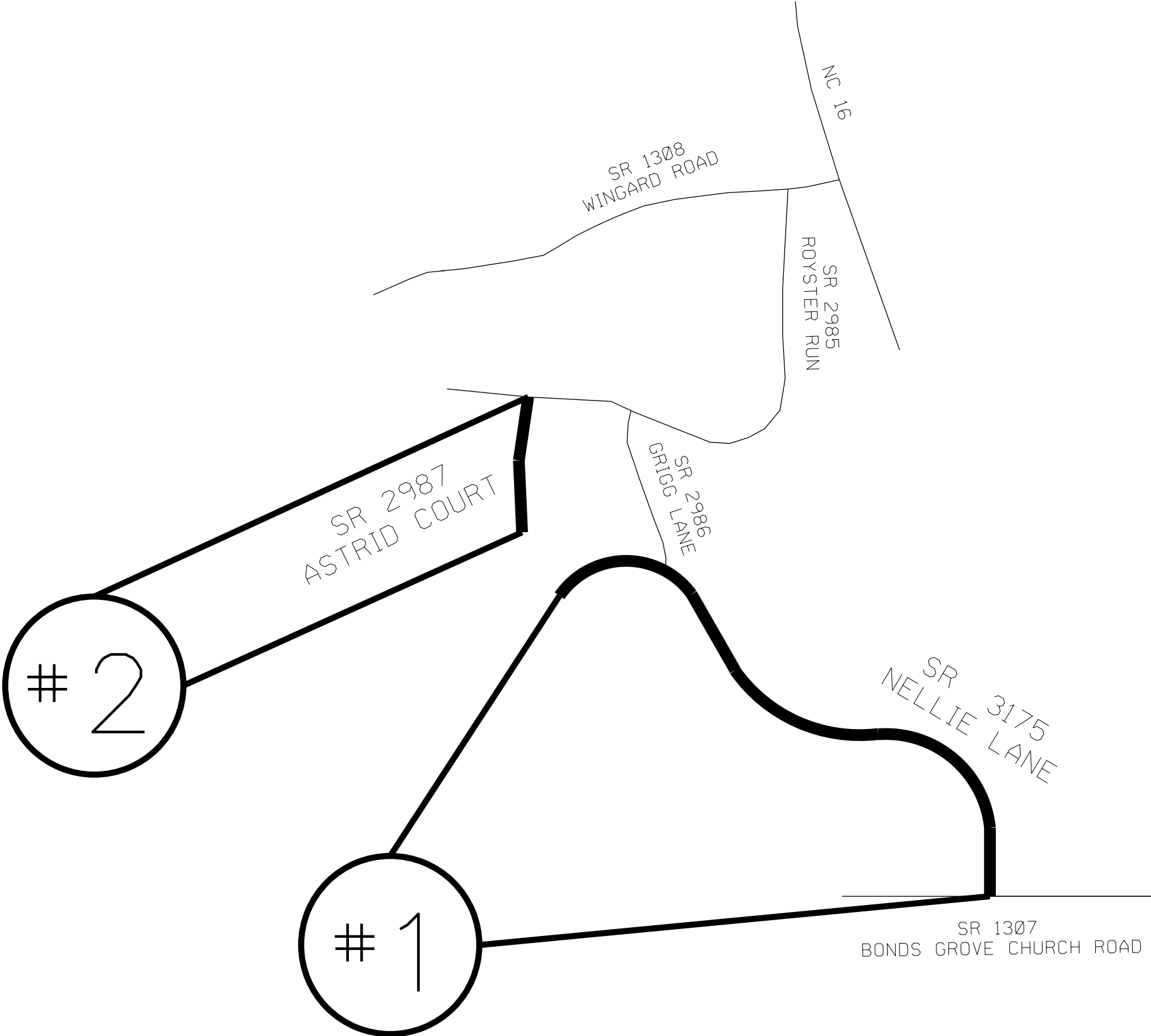
NORTH CAROLINA

PREPARED BY THE

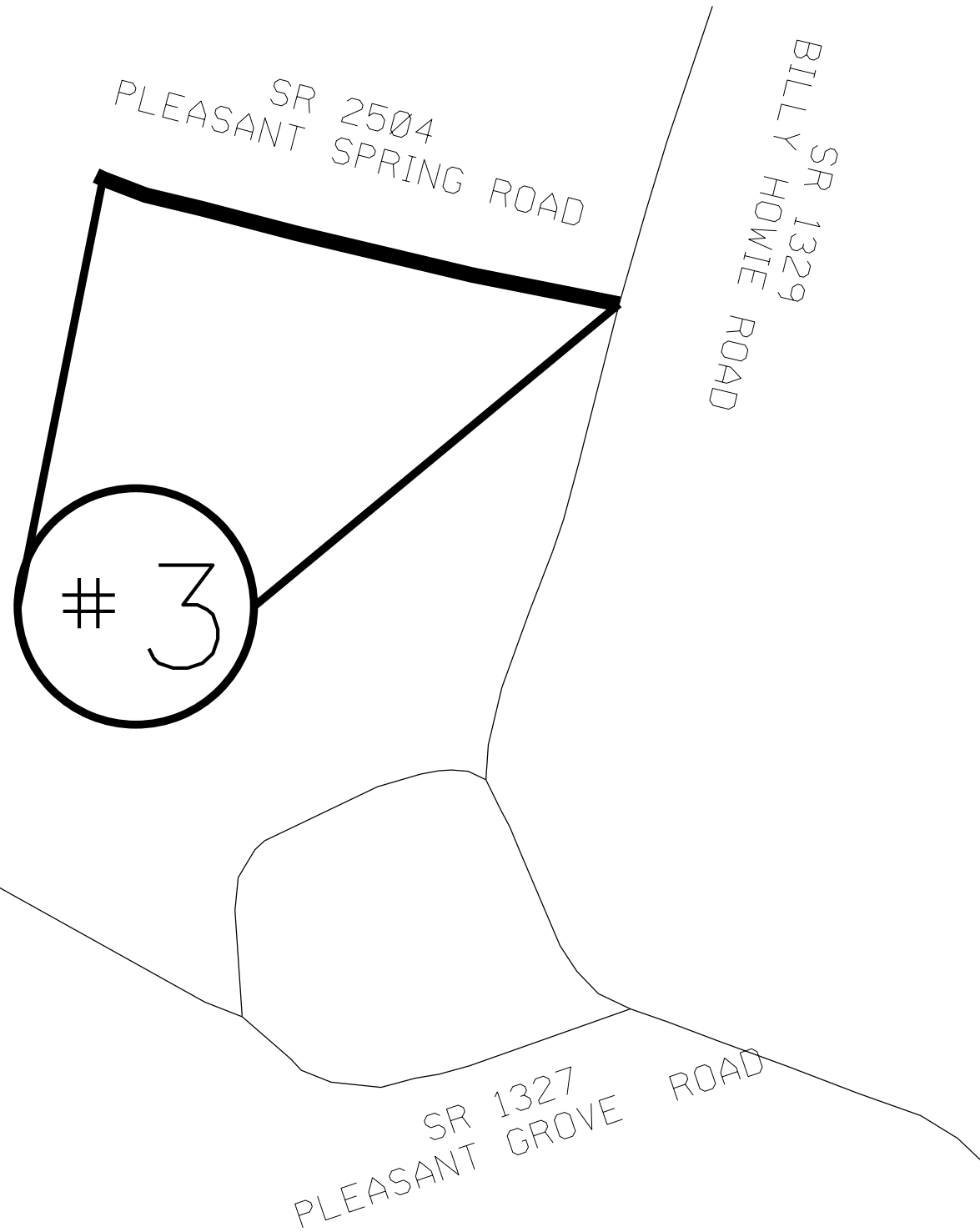
NORTH CAROLINA DEPARTMENT OF TRANSPORTATION
DIVISION OF HIGHWAYS - DIVISION 10 DISTRICT 3

MAP #1 SR 3175 NELLIE LANE
0.39 MILES
FROM SR 1307 BONDS GROVE CHUCH ROAD
TO CUL DE SAC

MAP #2 SR 2987 ASTRID COURT
0.11 MILES
FROM SR 2985 ROYSTER RUN
TO CUL DE SAC



STATE	PROJECT NO.	SHEET NO.	TOTAL SHEETS
N.C.	2023CPT.10.13.20901	2	
F.A. PROJECT NO.			



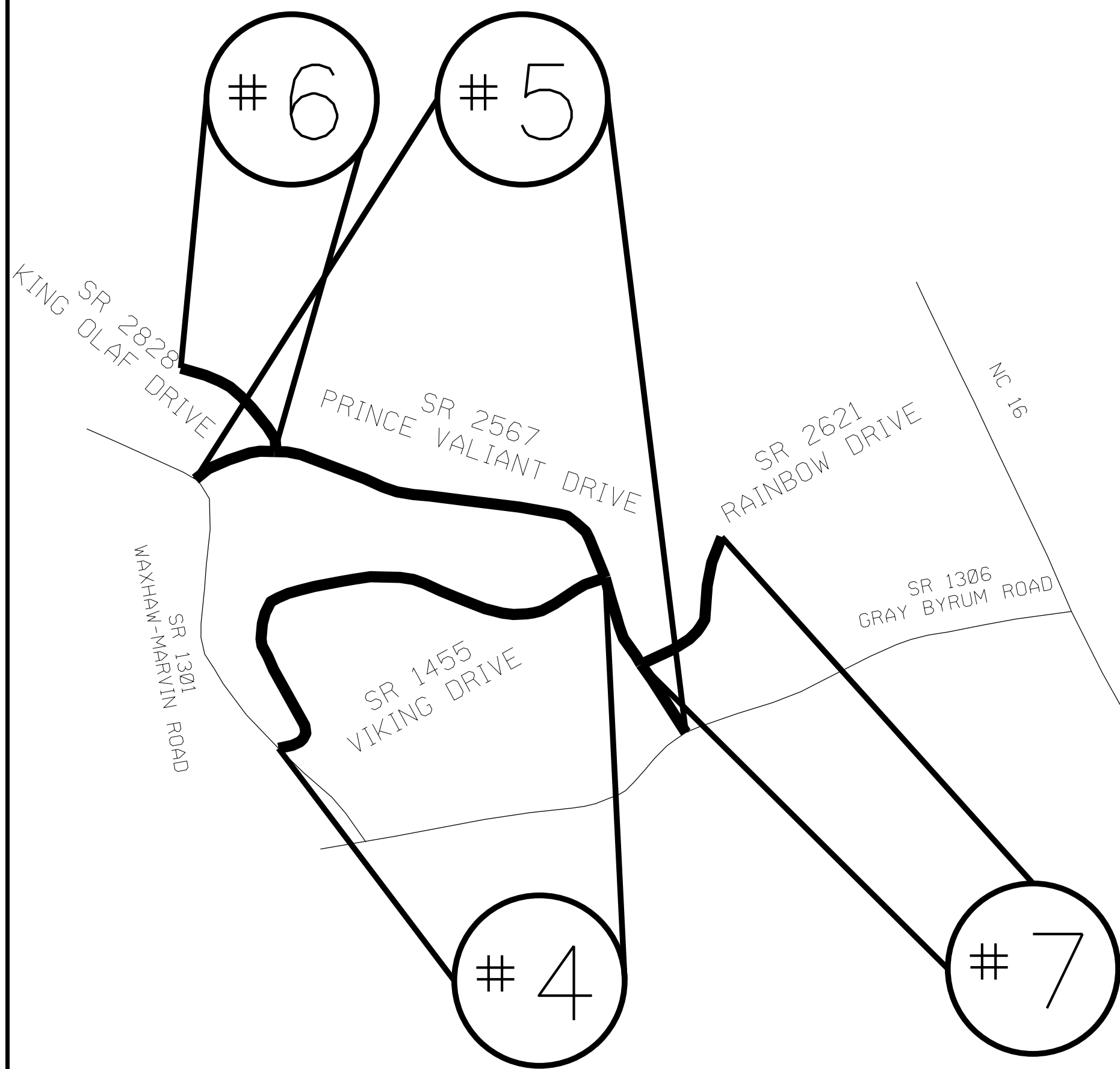
ENLARGED MUNICIPAL AND SUBURBAN AREAS
 UNION COUNTY
 NORTH CAROLINA
PREPARED BY THE
 NORTH CAROLINA DEPARTMENT OF TRANSPORTATION
 DIVISION OF HIGHWAYS - DIVISION 10 DISTRICT 3

MAP #3 SR 2504 PLEASANT SPRING ROAD
 0.33 MILES
 FROM SR 1329 BILLY HOWIE ROAD
 TO END OF MAINTANANCE

STATE	PROJECT NO.	SHEET NO.	TOTAL SHEETS
N.C.	2023CPT.10.13.20901	3	
F.A. PROJECT NO.			



ENLARGED MUNICIPAL AND SUBURBAN AREAS
UNION COUNTY
 NORTH CAROLINA
PREPARED BY THE
 NORTH CAROLINA DEPARTMENT OF TRANSPORTATION
 DIVISION OF HIGHWAYS - DIVISION 10 DISTRICT 3



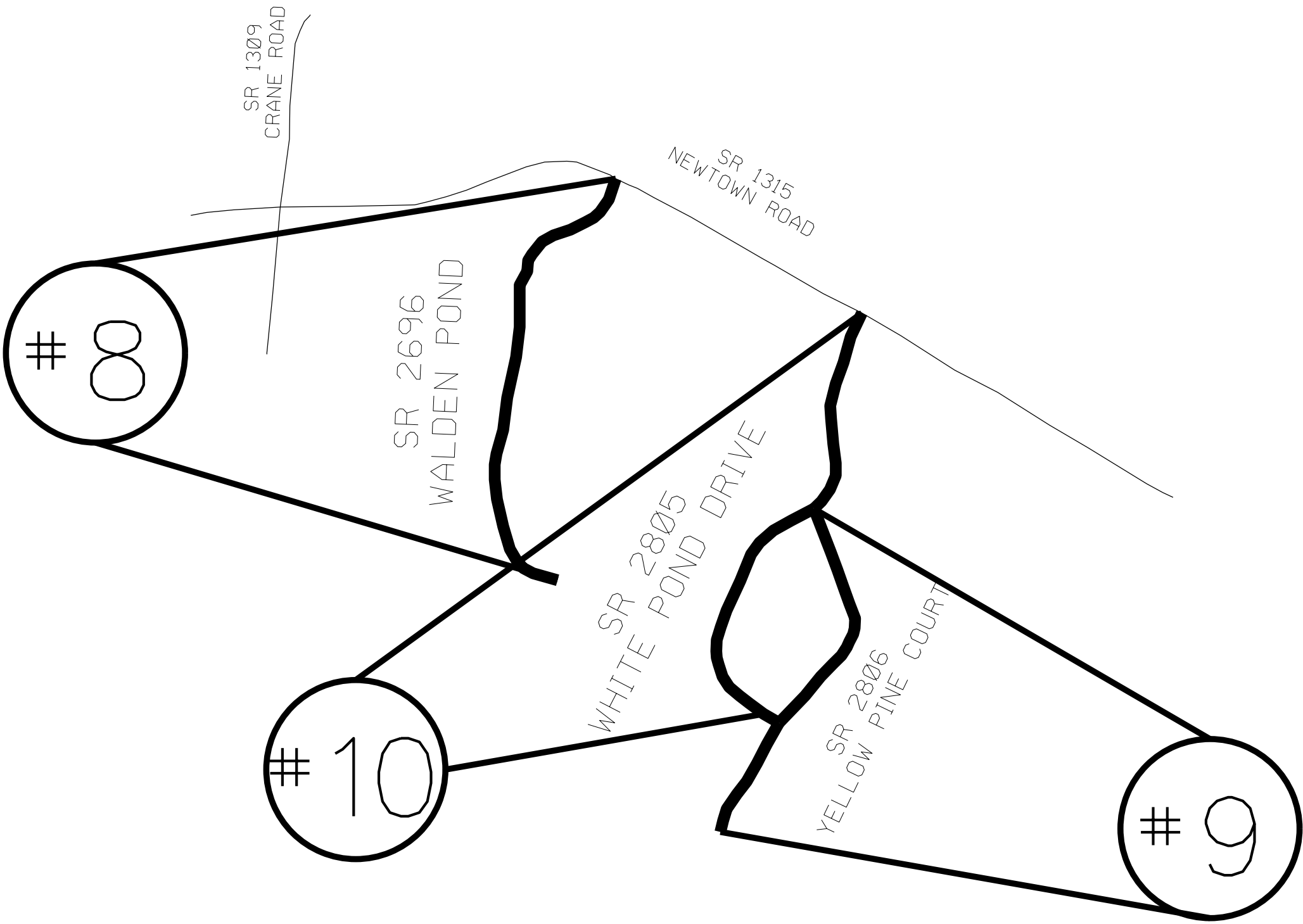
- MAP #4 SR 1455 VIKING DRIVE
0.73 MILES
FROM SR 1301 WAXHAW-MARVIN ROAD
TO SR 2567 PRINCE VALIANT DRIVE
- MAP #5 SR 2567 PRINCE VALIANT DRIVE
0.87 MILES
FROM SR 1301 WAXHAW-MARVIN ROAD
TO SR 1306 GRAY BYRUM ROAD
- MAP #6 SR 2828 KING OLAF DRIVE
0.19 MILES
FROM SR 2567 PRINCE VALIANT DRIVE
TO CUL DE SAC
- MAP #7 SR 2621 RAINBOW DRIVE
0.22 MILES
FROM SR 2567 PRINCE VALIANT DRIVE
TO END OF MAINTANANCE

STATE	PROJECT NO.	SHEET NO.	TOTAL SHEETS
	2023CPT.10.13.20901	4	
F.A. PROJECT NO.			



ENLARGED MUNICIPAL AND SUBURBAN AREAS
UNION COUNTY
 NORTH CAROLINA

PREPARED BY THE
 NORTH CAROLINA DEPARTMENT OF TRANSPORTATION
 DIVISION OF HIGHWAYS - DIVISION 10 DISTRICT 3



MAP #8 SR 2696 WALDEN POND
 0.52 MILES
 FROM SR 1315 NEWTOWN ROAD
 TO CUL DE SAC

MAP #9 SR 2806 YELLOW PINE COURT
 0.4 MILES
 FROM SR 2805 WHITE POND DRIVE
 TO CUL DE SAC

MAP #10 SR 2805 WHITE POND DRIVE
 0.53 MILES
 FROM SR 1315 NEWTOWN ROAD
 TO SR 2806 YELLOW PINE COURT

STATE	PROJECT NO.	SHEET NO.	TOTAL SHEETS
N.C.	2023CPT.10.13.20901	5	
F.A. PROJECT NO.			



ENLARGED MUNICIPAL AND SUBURBAN AREAS

UNION COUNTY

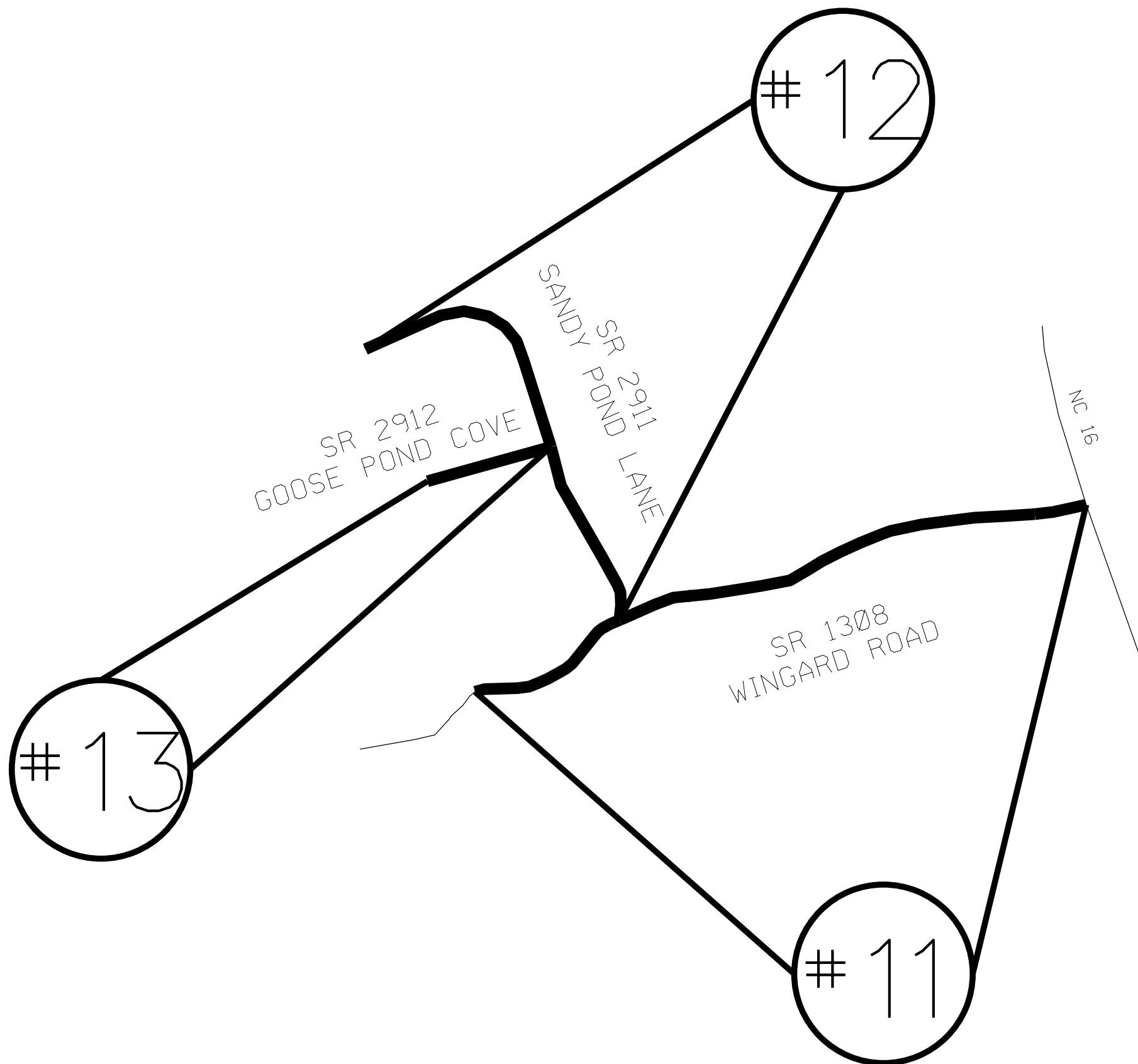
NORTH CAROLINA

PREPARED BY THE
NORTH CAROLINA DEPARTMENT OF TRANSPORTATION
DIVISION OF HIGHWAYS - DIVISION 10 DISTRICT 3

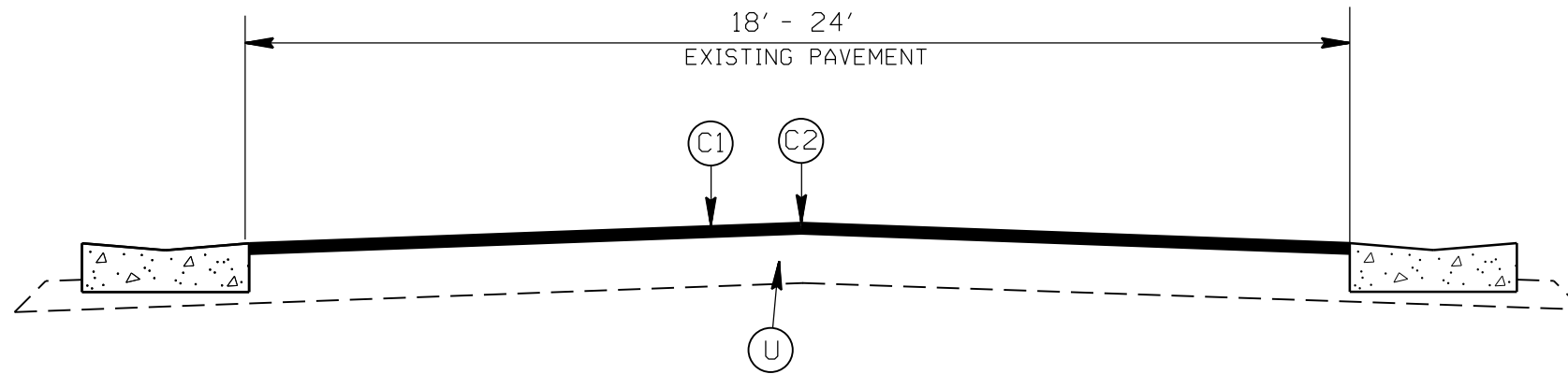
MAP # 11 SR 1308 WINGARD ROAD
0.8 MILES
FROM NC 16 FOR 0.8 MILES

MAP # 12 SR 2911 SANDY POND LANE
0.36 MILES
FROM SR 1308 WINGARD ROAD
TO CUL DE SAC

MAP # 13 SR 2912 GOOSE POND COVE
0.11 MILES
FROM SR 2911 SANDY POND ROAD
TO CUL DE SAC



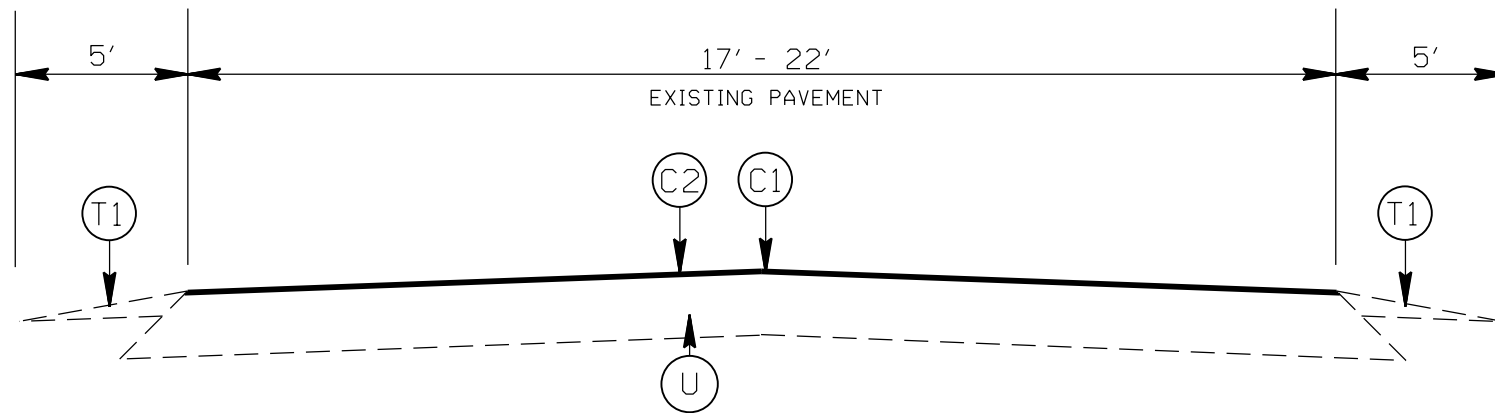
STATE	PROJECT NO.	SHEET NO.	TOTAL SHEETS
N.C.	2023CPT.10.13.20901	6	
F.A. PROJECT NO.			



TYPICAL SECTION 1
 SR 3175 NELLIE LANE (MAP 1)
 SR 2987 ASTRID COURT (MAP 2)
 SR 1308 WINGARD ROAD (MAP 11)
 APPROX. STA. 46+96 TO END OF MAP


PAVEMENT SCHEDULE

(C1)	PROP. APPROX. 1.0" ASPHALT CONC. SURFACE COURSE, TYPE S4.75A, AT AN AVERAGE RATE OF 110 LBS. PER SQ. YD.
(C2)	ASPHALT SURFACE TREATMENT, MAT COAT #78
(T1)	SHOULDER RECONSTRUCTION
(U)	EXISTING PAVEMENT

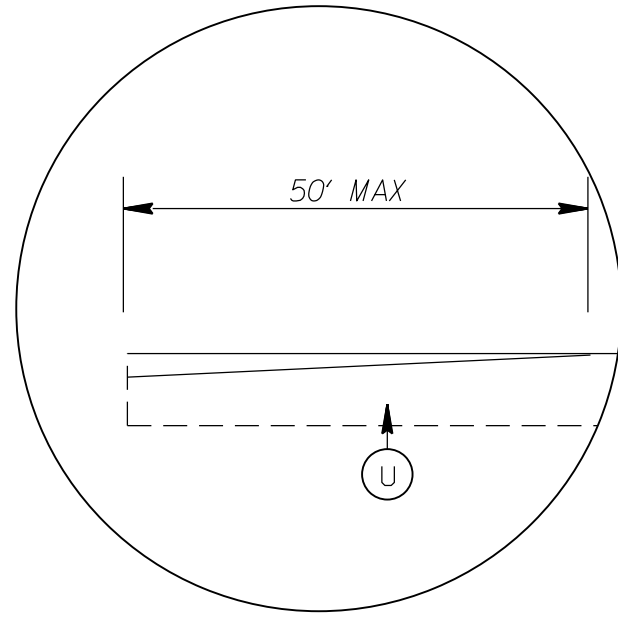


TYPICAL SECTION 2
 MAPS 3 THRU 13

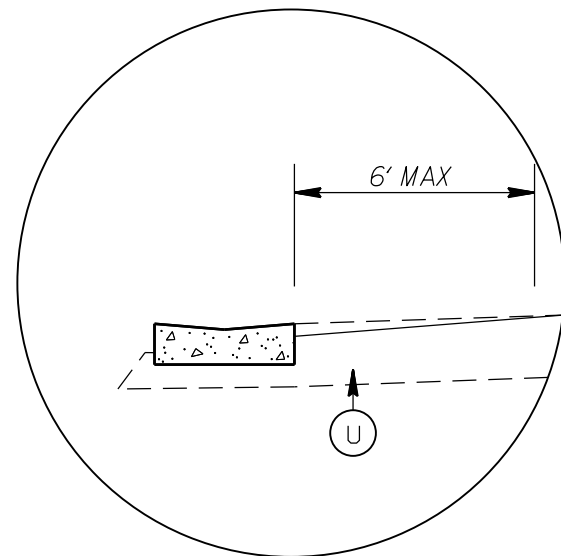
PATCHING AND LEVELING WILL BE DONE BY STATE FORCES

2023-2024 UNION COUNTY RESURFACING			
SCALE	-NA-		REVISIONS
DATE	1/20		
DWG. BY	AMO		
DESIGN BY	AMO		
APPROVED	CLA		

STATE	PROJECT NO.	SHEET NO.	TOTAL SHEETS
N.C.	2023CPT.10.13.20901	7	
F.A. PROJECT NO.			



DETAIL FOR INCIDENTAL MILLING (0" TO 1.0")
TIE IN



DETAIL FOR PROFILE MILLING (0-1.0")
MAPS 1 AND 2

PAVEMENT SCHEDULE

(C1)	PROP. APPROX. 1.0" ASPHALT CONC. SURFACE COURSE, TYPE S4.75A, AT AN AVERAGE RATE OF 110 LBS. PER SQ. YD.
(C2)	ASPHALT SURFACE TREATMENT, MAT COAT #78
(T1)	SHOULDER RECONSTRUCTION
(U)	EXISTING PAVEMENT

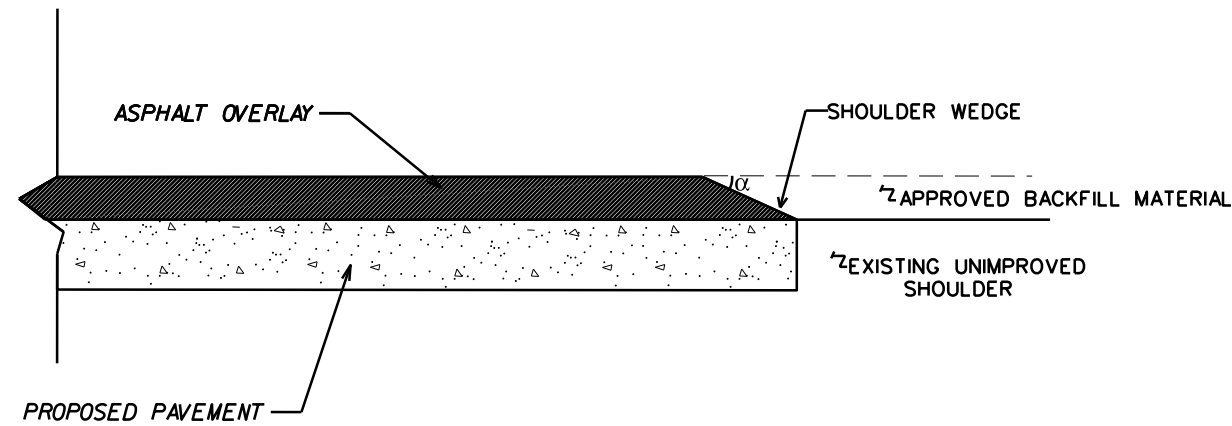
PATCHING AND LEVELING WILL BE DONE BY STATE FORCES

2023-2024 UNION COUNTY RESURFACING			
SCALE	-N/A-		REVISIONS
DATE	9/21		
DWG. BY	AMO		
DESIGN BY	AMO		
APPROVED			

NOTES:

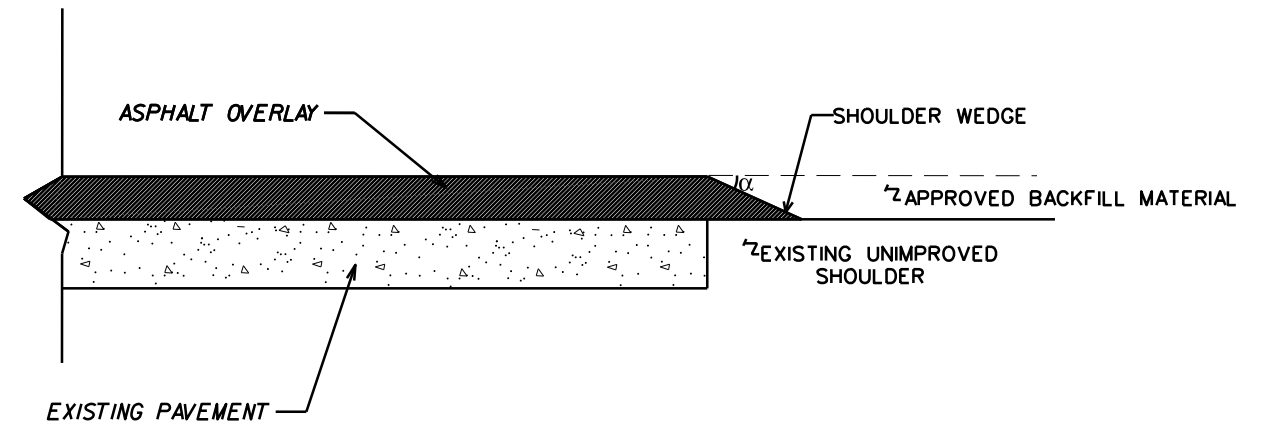
- 1) DETAIL DOES NOT APPLY TO OGAFC AND ULTRA-THIN BONDED WEARING COURSE.
- 2) BACKFILL SHOULDER WITH APPROVED MATERIAL.
- 3) THE SHOULDER WEDGE DEVICE MAY BE DISENGAGED AT PAVED DRIVEWAYS AND SIDE STREETS.

STATE	PROJECT NO.	SHEET NO.	TOTAL SHEETS
N.C.	2023CPT.10.13.20901	8	
F.A. PROJECT NO.			



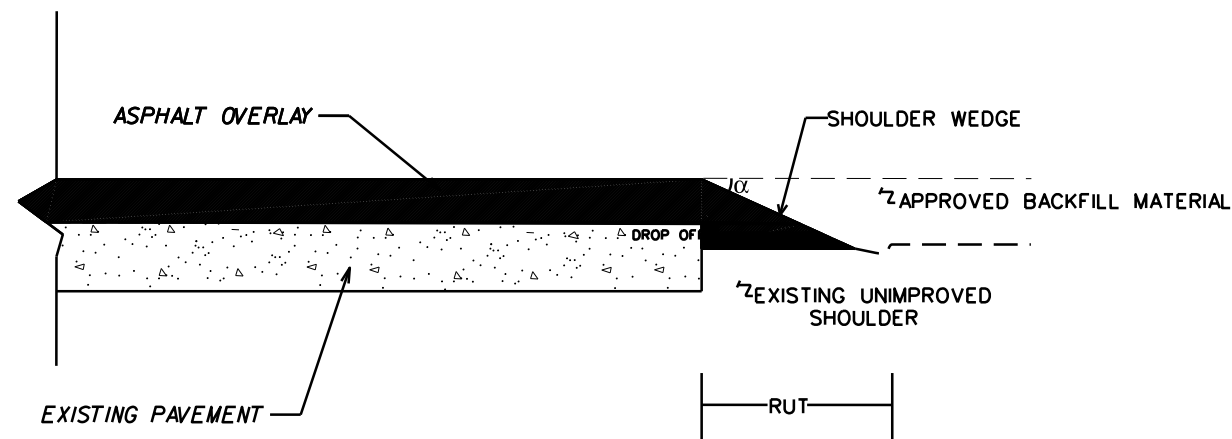
SHOULDER WEDGE DETAIL

(RESURFACING PROJECTS W/ WIDENING OR WITH EXISTING PAVED SHOILDER HAVING NO DROPOFFS)



SHOULDER WEDGE DETAIL

(RESURFACING PROJECTS W/ NO WIDENING)



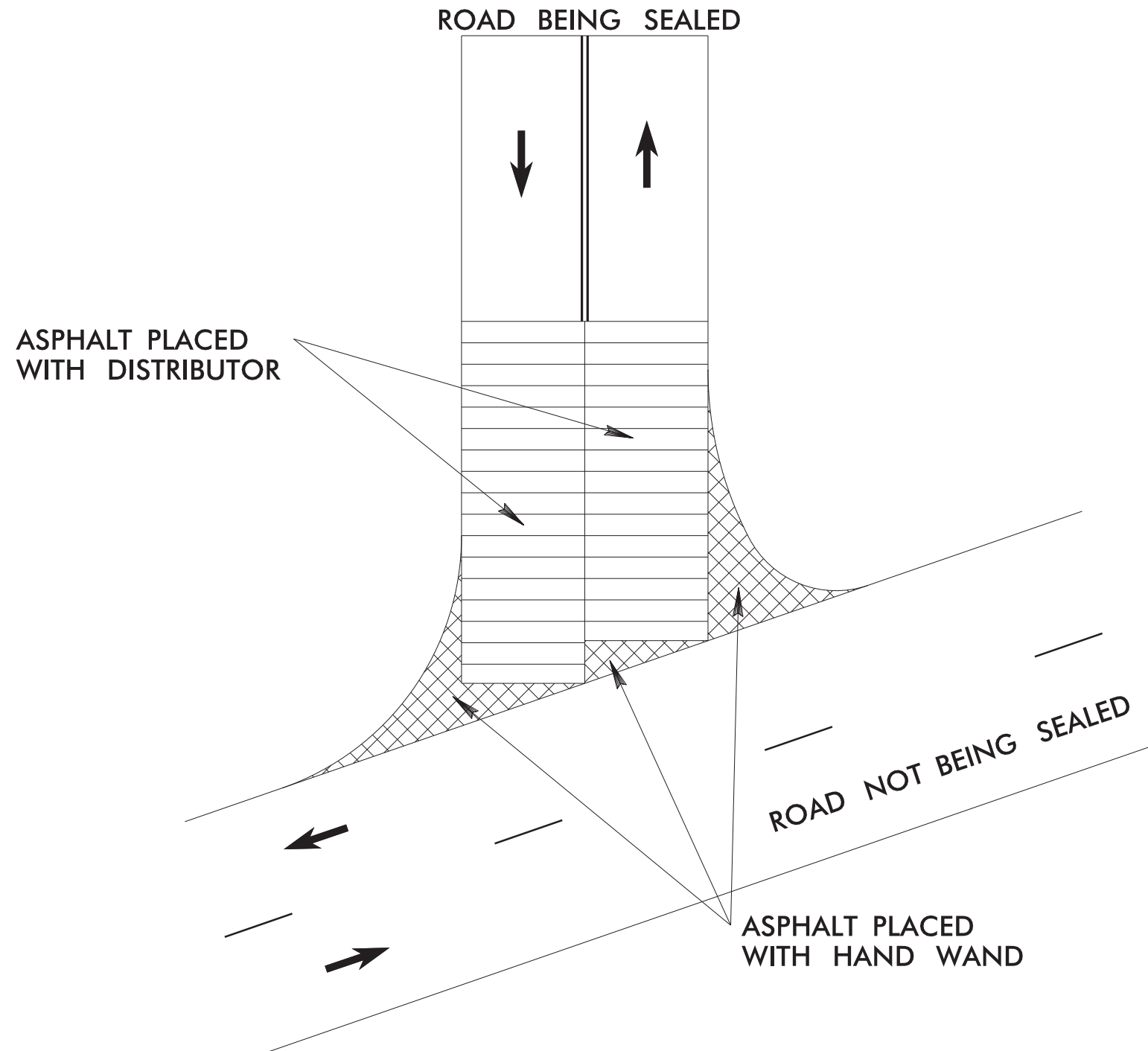
SHOULDER WEDGE DETAIL
(RESURFACING ADJACENT TO RUTTED SHOULDER)

$\alpha = 30$ DEGREES

SHOULDER WEDGE DETAILS			
SCALE	-NA-		REVISIONS
DATE	11/20		
DWG. BY	AMO		
DESIGN BY	AMO		
APPROVED			

INTERSECTION EMULSION PLACEMENT TWO LANE TWO WAY ROADWAY

STATE	PROJECT NO.	SHEET NO.	TOTAL SHEETS
N.C.	2023CPT.10.13.20901	9	
F.A. PROJECT NO.			



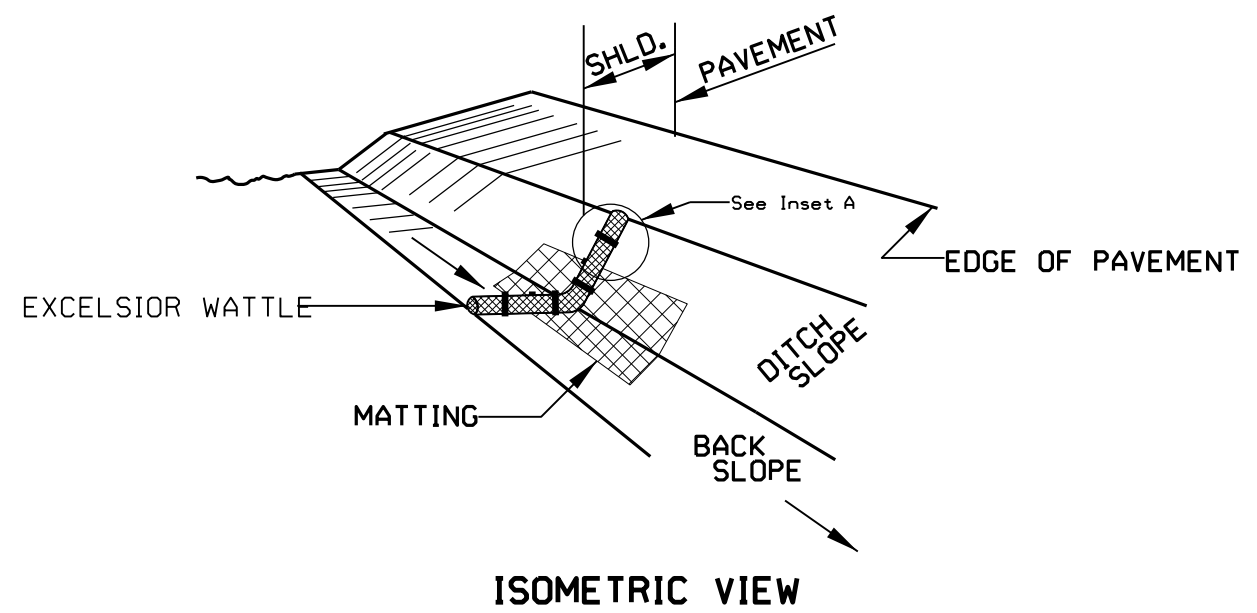
LEGEND

- ➔ DIRECTION OF TRAFFIC FLOW
- SKIP LINES
- === DOUBLE YELLOW LINES

<i>INTERSECTION EMULSION PLACEMENT</i>		
SCALE	N/A	REVISIONS
DATE	9-2019	
DWG. BY	TBL	
DESIGN BY	TBL	
APPROVED	TWB	

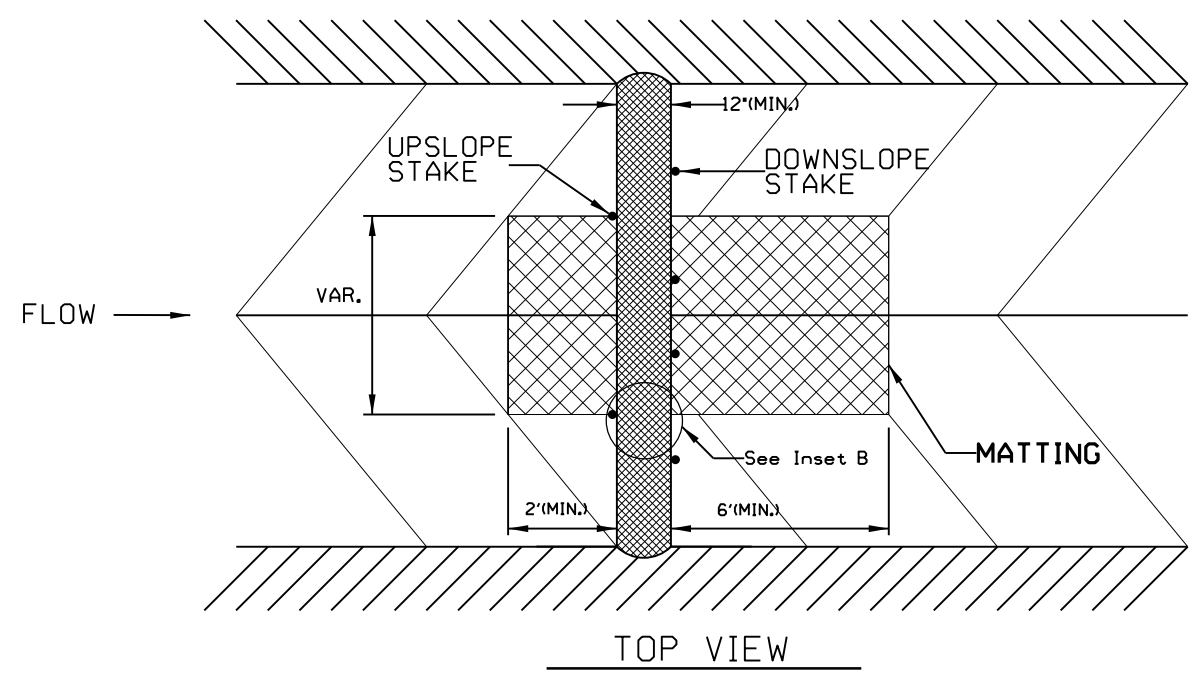
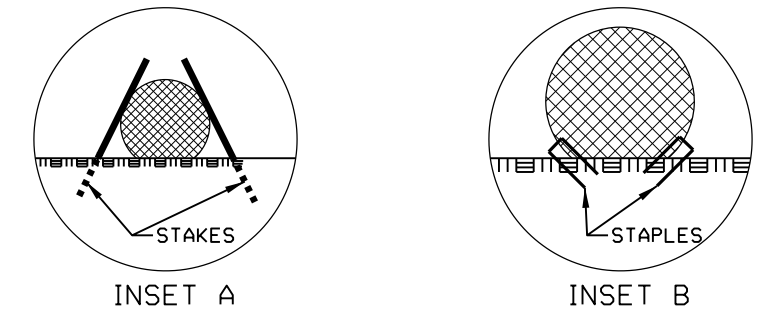
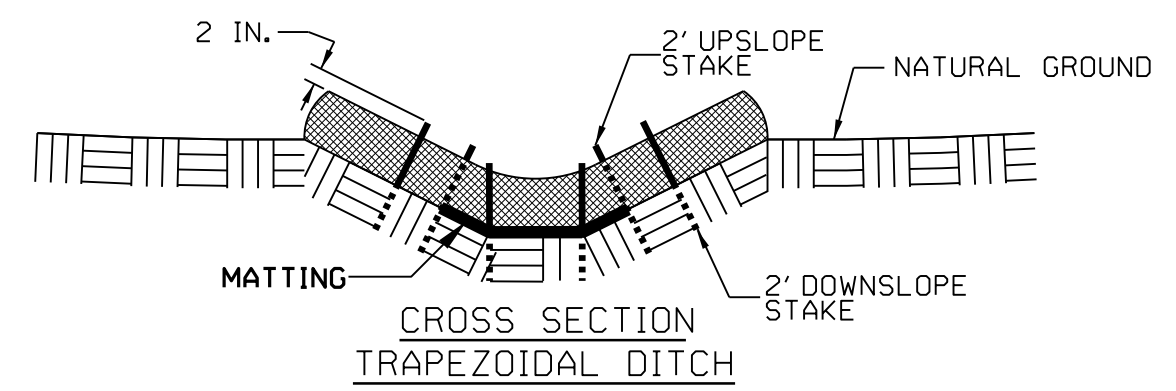
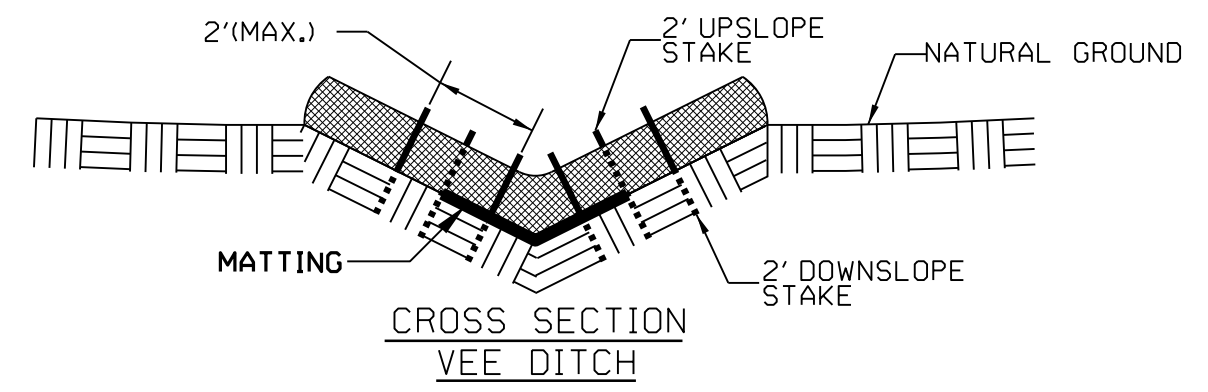


WATTLE DETAIL



NOTES:

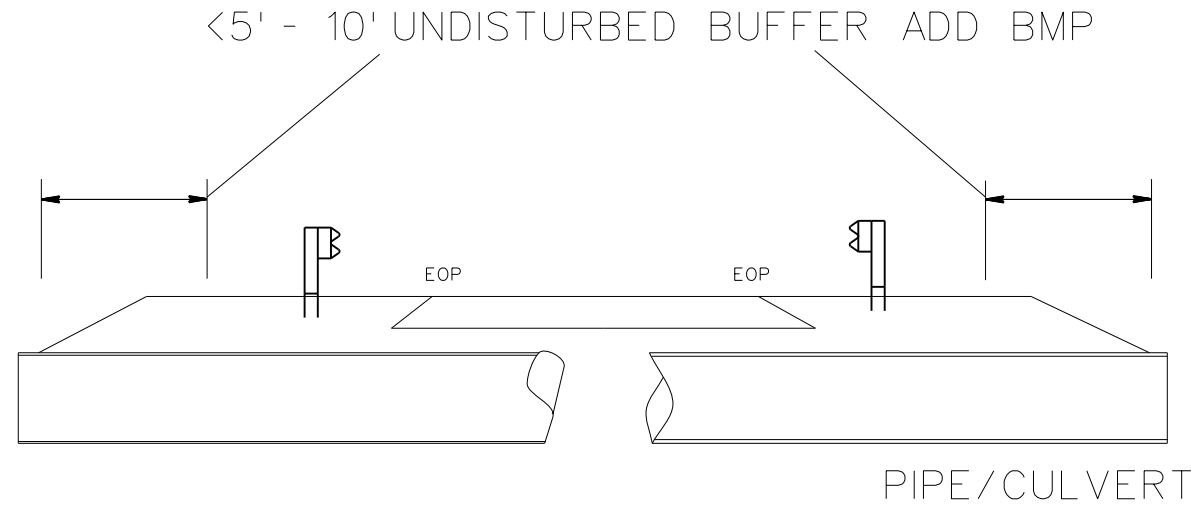
- USE MINIMUM 12 IN. DIAMETER EXCELSIOR WATTLE.
- USE 2 FT. WOODEN STAKES WITH A 2 IN. BY 2 IN. CROSS SECTION.
- INSTALL A MINIMUM OF 2 UPSLOPE STAKES AND 4 DOWNSLOPE STAKES AT AN ANGLE TO WEDGE WATTLE TO BOTTOM OF DITCH.
- PROVIDE STAPLES MADE OF 0.125 IN. DIAMETER STEEL WIRE FORMED INTO A U SHAPE NOT LESS THAN 12" IN LENGTH.
- INSTALL STAPLES APPROXIMATELY EVERY 1 LINEAR FOOT ON BOTH SIDES OF WATTLE AND AT EACH END TO SECURE IT TO THE SOIL.
- INSTALL MATTING IN ACCORDANCE WITH SECTION 1631 OF THE STANDARD SPECIFICATIONS.



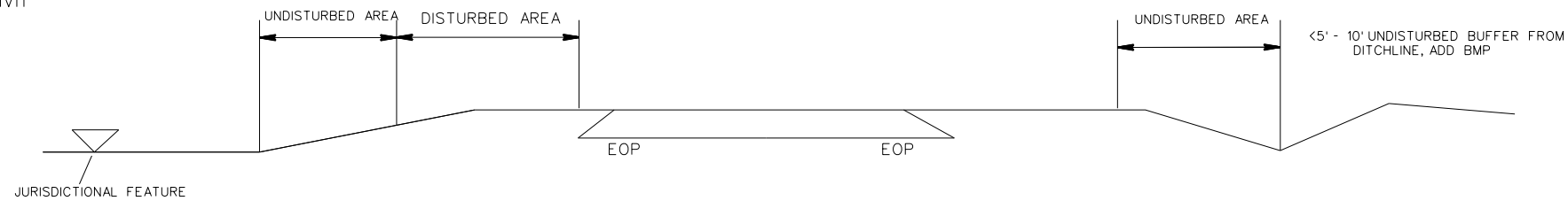
NOTES: LESS THAN 5' - 10' UNDISTURBED BUFFER FROM ROW, DITCHLINE, WATER FEATURE, OR DRAINAGE INLET, ADD BMP.

BMP OPTIONS: WATTLE OR SILT FENCE

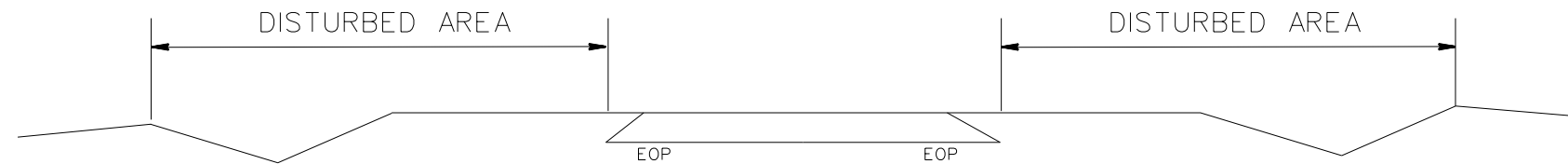
STATE	PROJECT NO.	SHEET NO.	TOTAL SHEETS
N.C.	2023CPT.10.13.20901	EC2	
F.A. PROJECT NO.			



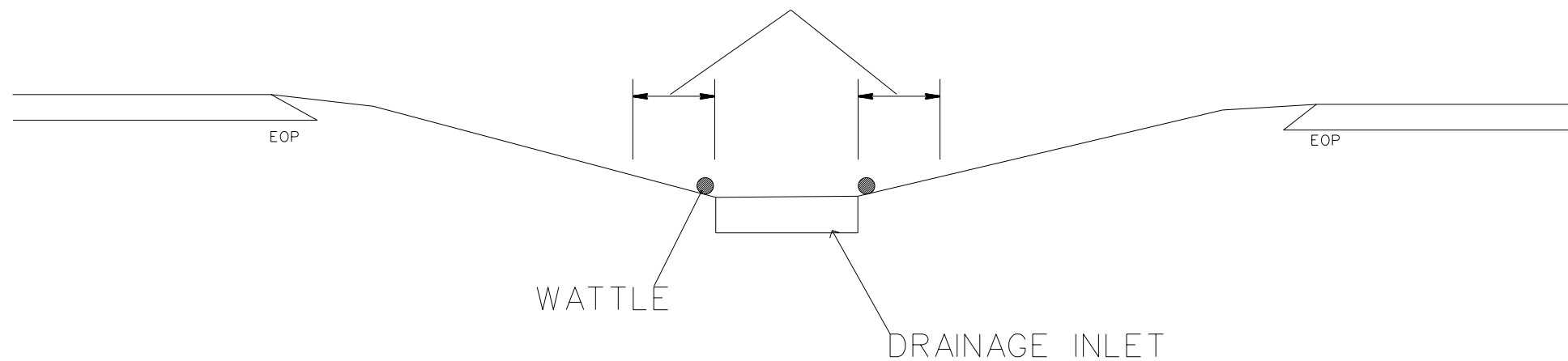
<5' - 10' UNDISTURBED BUFFER FROM JURISDICTIONAL FEATURE ADD BMP




USE BMP'S IF SHOULDERS AND/OR FRONTSLOPES AND/OR DITCHLINE AND/OR BACKSLOPES ARE DISTURBED



<5' - 10' UNDISTURBED BUFFER FROM INLET, ADD WATTLE

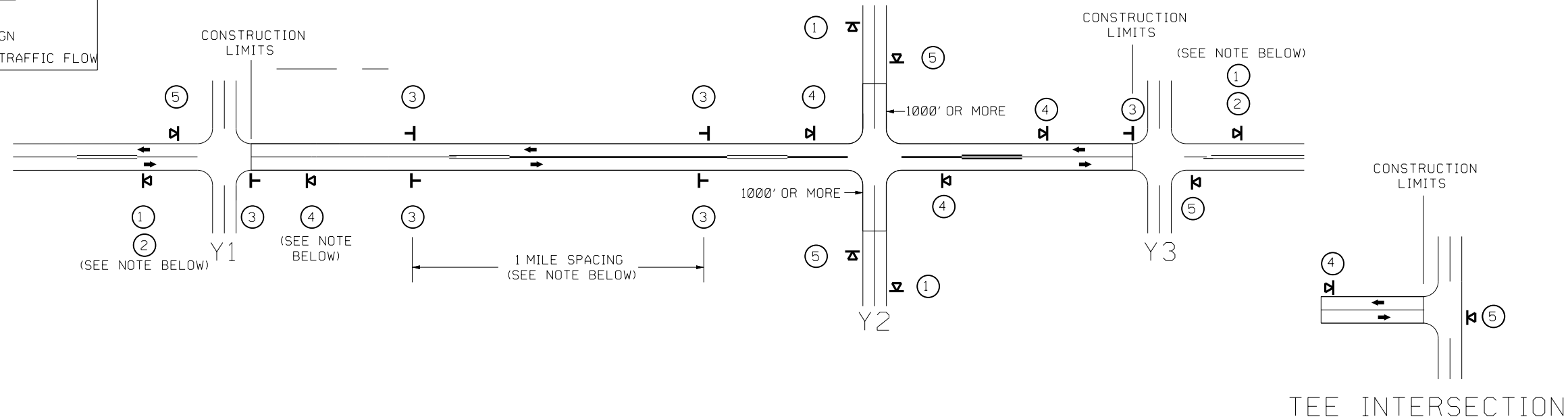


<i>EROSION CONTROL DETAIL</i>		REVISIONS	
SCALE	-NA-		
DATE	11/20		
DWG. BY	AMO		
DESIGN BY	AMO		
APPROVED			

SIGNING FOR ASPHALT SURFACE TREATMENT

LEGEND

- PORTABLE SIGN
- STATIONARY SIGN
- DIRECTION OF TRAFFIC FLOW



MAINLINE (-L-) SIGNING

-Y- LINE SIGNING

TEE INTERSECTION

SIGNING NOTES AND PLACEMENT PER DIRECTION	 	<p>- PLACE 1000' PRIOR TO BEGINNING OF CONSTRUCTION LIMITS. ONLY USED ON -Y- LINES IF RESURFACING LIMITS EXTEND 1000' ALONG -Y- LINE.</p> <p>SIGN #2 ONLY USED WHEN RESURFACING LIMITS ARE 2 OR MORE MILES IN LENGTH. ROUND UP TO THE NEAREST WHOLE NUMBER. DO NOT USE FRACTIONAL OR DECIMAL NUMBERS.</p>	<p>STATIONARY SIGNING NOT REQUIRED FOR THE FOLLOWING -Y- LINE CONDITIONS:</p> <ol style="list-style-type: none"> LESS THAN 1000' OF RESURFACING ALONG -Y- LINE SUBDIVISION ROADS DEAD END ROADS <p>WHEN PAVING/CONSTRUCTION ACTIVITIES PROCEED ACROSS AN UNSIGNED -Y- LINE, PORTABLE ADVANCE WARNING SIGNS SHALL BE USED ALONG THE -Y- LINE AS SHOWN BELOW. REMOVE UPON COMPLETION OF WORK.</p> <div style="display: flex; justify-content: space-around;"> <div> PLACED 500' IN ADVANCE OF FLAGGER. </div> <div> PLACED 250' IN ADVANCE OF FLAGGER. </div> </div>
	 	<p>- ALTERNATE THE FOLLOWING TWO SIGNS:</p> <p>- STARTING WITH "LOOSE GRAVEL" (W8-7) FOLLOWED BY "UNMARKED PAVEMENT".</p> <p>- PLACE INITIALLY AT THE CONSTRUCTION LIMITS AND SPACED 1 MILE APART THEREAFTER.</p> <p>- AT TEE INTERSECTIONS INSTALL INITIALLY 0.5 MILE FROM INTERSECTION AND SPACE 1 MILE APART THEREAFTER.</p>	
		<p>- THESE ARE FOR -Y- LINES THAT ARE "THROUGH" ROADWAYS. DEAD END AND SUBDIVISION ROADS ARE NOT "THROUGH" ROADWAYS.</p> <p>- INSTALL 500' +/- FROM EACH -Y- LINE APPROACH AS SHOWN ABOVE.</p> <p>- FOR MULTIPLE -Y- LINES THAT ARE SEPARATED BY 0.25 MILES OR LESS, TREAT AS A SINGLE UNIT AND INSTALL WITHIN 500' OF EACH APPROACH.</p> <p>- A MAXIMUM OF 2 SIGN SETS PER MILE. DO NOT INSTALL WHEN -Y- LINES ARE WITHIN 0.5 MILES FROM "END ROAD WORK" SIGN.</p>	
		<p>PLACE 500' FOLLOWING THE END OF CONSTRUCTION LIMITS OR AS SHOWN WHEN WORK ENDS AT A 3-WAY TEE INTERSECTION.</p>	
	<p>THE ABOVE SIGNS ARE ALL THAT ARE REQUIRED FOR A CONTRACTOR TO BEGIN A RESURFACING CONTRACT. ANY ADDITIONAL SIGNS REQUESTED BY NCDOT DIVISIONS SHALL BE INSTALLED WITHIN 7 BUSINESS DAYS OF THE START OF CONTRACT WORK.</p>		

MAPS LESS THAN 2 MILES

FOR AST RESURFACING MAPS WITH CONSTRUCTION LIMITS LESS THAN 2 MILES IN LENGTH, USE A STATIONARY "LOOSE GRAVEL" SIGN AT THE BEGINNING CONSTRUCTION LIMIT FOLLOWED BY AN "UNMARKED PAVEMENT" SIGN MIDWAY THROUGH AND AN "END ROAD WORK" SIGN AT THE END CONSTRUCTION LIMIT.



ADVANCE WARNING SIGNS FOR 2-LANE ROADWAY ASPHALT SURFACE TREATMENT

PROJECT NO.	SHEET NO.	TOTAL NO.
2023CPT.10.13.20901	10	

SUMMARY OF QUANTITIES

PROJECT NO	COUNTY	MAP NO	ROUTE	DESCRIPTION	TYP NO	LANES	LANE TYPE	FINAL SURFACE TESTING REQUIRED	WARM MIX ASPHALT REQUIRED	LENGTH	WIDTH	0106000000-E	1220000000-E	1245000000-E	1308000000-E	1330000000-E	1526000000-E	1575000000-E	1775000000-E	1838000000-E	1838500000-N	2830000000-N	6000000000-E	6009000000-E	6012000000-E	6071010000-E	6084000000-E		
												BORROW	INCIDENTAL STONE BASE	SHOULDER RECONSTRUCTION	0" TO 1.0" MILLING	INCIDENTAL MILLING	ASPHALT CONC SURFACE COURSE, TYPE S4.75A	ASPHALT BINDER FOR PLANT MIX	ASPHALT SURFACE TREATMENT, MATCOAT, #78M STONE	EMULSION FOR ASPHALT SURFACE TREATMENT	VACUUM TRUCK	ADJ. OF MANHOLES	TEMPORARY SILT FENCE	STONE FOR EROSION CONTROL, CLASS B	SEDIMENT CONTROL STONE	WATTLE	SEED & MULCHING		
												MI	FT	CY	TONS	SMI	SY	SY	TON	TONS	SY	GAL	WK	EA	LF	TN	TN	LF	AC
2023CPT.10.13.20901	Union	1	SR 3175 NELLIE LANE / ROUTE ID 40003175090	FROM SR 1307 BONDS GROVE CHURCH ROAD TO CUL DE SAC MILEPOST 0-0.39	1	2	2WU	NO	NO	0.39	20-24						2,759	139	324	23	5,353	1,875	1.00	5					
TOTAL FOR MAP NO. 1												0.39						2,759	139	324	23	5,353	1,875	1.00	5				
2023CPT.10.13.20901	Union	2	SR 2987 ASTRID COURT / ROUTE ID 40002987090	FROM SR 2985 ROYSTER RUN TO CUL DE SAC MILEPOST 0-0.11	1	2	2WU	NO	NO	0.11	24						803	139	97	7	1,605	565		3					
TOTAL FOR MAP NO. 2												0.11						803	139	97	7	1,605	565		3				
2023CPT.10.13.20901	Union	3	SR 2504 PLEASANT SPRING ROAD / ROUTE ID 40002504090	FROM SR 1329 BILLY HOWIE ROAD TO END OF MAINTANANCE MILEPOST 0-0.33	2	2	2WU	NO	NO	0.33	18-19	34	90	0.70		110	215	15	3,575	1,255			25	3	1	25	0.4		
TOTAL FOR MAP NO. 3												0.33		34	90	0.70		110	215	15	3,575	1,255		25	3	1	25	0.4	
2023CPT.10.13.20901	Union	4	SR 1455 VIKING DRIVE / ROUTE ID 40001455090	FROM SR 1301 WAXHAW-MARVIN ROAD TO SR 2567 PRINCE VALIANT DRIVE MILEPOST 0-0.73	2	2	2WU	NO	NO	0.73	20	74	15	1.50		110	515	36	8,564	3,000			55	7	3	55	0.9		
TOTAL FOR MAP NO. 4												0.73		74	15	1.50		110	515	36	8,564	3,000		55	7	3	55	0.9	
2023CPT.10.13.20901	Union	5	SR 2567 PRINCE VALIANT DRIVE / ROUTE ID 40002567090	FROM SR 1301 WAXHAW-MARVIN ROAD TO SR 1306 GRAY BYRUM ROAD MILEPOST 0-0.87	2	2	2WU	NO	NO	0.87	20	88		1.70		222	615	43	10,200	3,570			65	8	3	65	1.1		
TOTAL FOR MAP NO. 5												0.87		88		1.70		222	615	43	10,200	3,570		65	8	3	65	1.1	
2023CPT.10.13.20901	Union	6	SR 2828 KING OLAF DRIVE / ROUTE ID 40002828090	FROM SR 2567 PRINCE VALIANT DRIVE TO CUL DE SAC MILEPOST 0-0.19	2	2	2WU	NO	NO	0.19	17-19	19		0.40			120	8	2,000	700			14	2	1	14	0.2		
TOTAL FOR MAP NO. 6												0.19		19		0.40			120	8	2,000	700		14	2	1	14	0.2	
2023CPT.10.13.20901	Union	7	SR 2621 RAINBOW DRIVE / ROUTE ID 40002621090	FROM SR 2567 PRINCE VALIANT DRIVE TO END OF MAINTANANCE MILEPOST 0-0.22	2	2	2WU	NO	NO	0.22	20	22	10	0.40			156	11	2,580	905			16	2	1	16	0.3		
TOTAL FOR MAP NO. 7												0.22		22	10	0.40			156	11	2,580	905		16	2	1	16	0.3	
2023CPT.10.13.20901	Union	8	SR 2696 WALDEN POND / ROUTE ID 40002696090	FROM SR 1315 NEWTOWN ROAD TO CUL DE SAC MILEPOST 0-0.52	2	2	2WU	NO	NO	0.52	21	53		1.00	117	390	27	6,438	2,255			39	4	2	39	0.6			
TOTAL FOR MAP NO. 8												0.52		53		1.00	117	390	27	6,438	2,255		39	4	2	39	0.6		
2023CPT.10.13.20901	Union	9	SR 2806 YELLOW PINE COURT / ROUTE ID 40002806090	FROM SR 2805 WHITE POND DRIVE TO CUL DE SAC MILEPOST 0-0.40	2	2	2WU	NO	NO	0.4	21.5	40		0.80		303	21	5,017	1,780			30	4	2	30	0.5			
TOTAL FOR MAP NO. 9												0.4		40		0.80		303	21	5,017	1,780		30	4	2	30	0.5		
2023CPT.10.13.20901	Union	10	SR 2805 WHITE POND DRIVE / ROUTE ID 40002805090	FROM SR 1315 NEWTOWN ROAD TO SR 2806 YELLOW PINE COURT MILEPOST 0-0.53	2	2	2WU	NO	NO	0.53	22	54		1.10	122	415	29	6,893	2,415			39	5	2	39	0.6			
TOTAL FOR MAP NO. 10												0.53		54		1.10	122	415	29	6,893	2,415		39	5	2	39	0.6		
2023CPT.10.13.20901	Union	11	SR 1308 WINGARD ROAD / ROUTE ID 40001308090	FROM NC 16 FOR 0.8 MILES MILEPOST 0-0.8	1,2	2	2WU	NO	NO	0.8	18-21	73		1.40	217	569	40	9,348	3,275			52	7	3	52	0.9			
TOTAL FOR MAP NO. 11												0.8		73		1.40	217	569	40	9,348	3,275		52	7	3	52	0.9		
2023CPT.10.13.20901	Union	12	SR 2911 SANDY POND LANE / ROUTE ID 40002911090	FROM SR 1308 WINGARD ROAD TO CUL DE SAC MILEPOST 0-0.36	2	2	2WU	NO	NO	0.36	20-22	36		0.70		280	20	4,415	1,550			25	3	1	25	0.4			
TOTAL FOR MAP NO. 12												0.36		36		0.70		280	20	4,415	1,550		25	3	1	25	0.4		
2023CPT.10.13.20901	Union	13	SR 2912 GOOSE POND COVE / ROUTE ID 40002912090	FROM SR 2911 SANDY POND ROAD TO CUL DE SAC MILEPOST 0-0.11	2	2	2WU	NO	NO	0.11	21	11		0.22		83	6	1,374	485			8	2	1	8	0.1			
TOTAL FOR MAP NO. 13												0.11		11		0.22		83	6	1,374	485		8	2	1	8	0.1		
TOTAL FOR PROJ NO. 2023CPT.10.13.20901												5.56		504	115	9.92	3,562	1,176	4,082	286	67,362	23,630	1.00	8	368	47	20	368	6.0
GRAND TOTAL												5.56		504	115	9.92	3,562	1,176	4,082	286	67,362	23,630	1.00	8	368	47	20	368	6.0

PROJECT NO.	SHEET NO.	TOTAL NO.
2023CPT.10.13.20901	11	

THERMOPLASTIC AND PAINT QUANTITIES

PROJECT NO	COUNTY	MAP NO	ROUTE	DESCRIPTION	TYP NO	LANES	LANE TYPE	LENGTH	WIDTH	441300000-E	445700000-N		
										WORK ZONE ADVANCE/GENERAL WARNING SIGNING	TEMPORARY TRAFFIC CONTROL		
										MI	FT	SF	LS
2023CPT.10.13.20901	Union	1	SR 3175 NELLIE LANE / ROUTE ID 40003175090	FROM SR 1307 BONDS GROVE CHURCH ROAD TO CUL DE SAC <u>MILEPOST 0-0.39</u>	1	2	2WU	0.39	20-24	40.0	1		
TOTAL FOR MAP NO. 1											0.39	40.0	1
2023CPT.10.13.20901	Union	2	SR 2987 ASTRID COURT / ROUTE ID 40002987090	FROM SR 2985 ROYSTER RUN TO CUL DE SAC <u>MILEPOST 0-0.11</u>	1	2	2WU	0.11	24	40.0	*		
TOTAL FOR MAP NO. 2											0.11	40.0	
2023CPT.10.13.20901	Union	3	SR 2504 PLEASANT SPRING ROAD / ROUTE ID 40002504090	FROM SR 1329 BILLY HOWIE ROAD TO END OF MAINTANANCE <u>MILEPOST 0-0.33</u>	2	2	2WU	0.33	18-19	40.0	*		
TOTAL FOR MAP NO. 3											0.33	40.0	
2023CPT.10.13.20901	Union	4	SR 1455 VIKING DRIVE /ROUTE ID 40001455090	FROM SR 1301 WAXHAW-MARVIN ROAD TO SR 2567 PRINCE VALIANT DRIVE <u>MILEPOST 0-0.73</u>	2	2	2WU	0.73	20	40.0	*		
TOTAL FOR MAP NO. 4											0.73	40.0	
2023CPT.10.13.20901	Union	5	SR 2567 PRINCE VALIANT DRIVE / ROUTE ID 40002567090	FROM SR 1301 WAXHAW-MARVIN ROAD TO SR 1306 GRAY BYRUM ROAD <u>MILEPOST 0-0.87</u>	2	2	2WU	0.87	20	80.0	*		
TOTAL FOR MAP NO. 5											0.87	80.0	
2023CPT.10.13.20901	Union	6	SR 2828 KING OLAF DRIVE / ROUTE ID 40002828090	FROM SR 2567 PRINCE VALIANT DRIVE TO CUL DE SAC <u>MILEPOST 0-0.19</u>	2	2	2WU	0.19	17-19		*		
TOTAL FOR MAP NO. 6											0.19		
2023CPT.10.13.20901	Union	7	SR 2621 RAINBOW DRIVE / ROUTE ID 40002621090	FROM SR 2567 PRINCE VALIANT DRIVE TO END OF MAINTANANCE <u>MILEPOST 0-0.22</u>	2	2	2WU	0.22	20		*		
TOTAL FOR MAP NO. 7											0.22		
2023CPT.10.13.20901	Union	8	SR 2696 WALDEN POND / ROUTE ID 40002696090	FROM SR 1315 NEWTOWN ROAD TO CUL DE SAC <u>MILEPOST 0-0.52</u>	2	2	2WU	0.52	21	40.0	*		
TOTAL FOR MAP NO. 8											0.52	40.0	
2023CPT.10.13.20901	Union	9	SR 2806 YELLOW PINE COURT / ROUTE ID 40002806090	FROM SR 2805 WHITE POND DRIVE TO CUL DE SAC <u>MILEPOST 0-0.40</u>	2	2	2WU	0.4	21.5		*		
TOTAL FOR MAP NO. 9											0.4		
2023CPT.10.13.20901	Union	10	SR 2805 WHITE POND DRIVE / ROUTE ID 40002805090	FROM SR 1315 NEWTOWN ROAD TO SR 2806 YELLOW PINE COURT <u>MILEPOST 0-0.53</u>	2	2	2WU	0.53	22	40.0	*		
TOTAL FOR MAP NO. 10											0.53	40.0	
2023CPT.10.13.20901	Union	11	SR 1308 WINGARD ROAD / ROUTE ID 40001308090	FROM NC 16 FOR 0.8 MILES <u>MILEPOST 0-0.8</u>	1,2	2	2WU	0.8	18-21	40.0	*		
TOTAL FOR MAP NO. 11											0.8	40.0	
2023CPT.10.13.20901	Union	12	SR 2911 SANDY POND LANE / ROUTE ID 40002911090	FROM SR 1308 WINGARD ROAD TO CUL DE SAC <u>MILEPOST 0-0.36</u>	2	2	2WU	0.36	20-22	40.0	*		
TOTAL FOR MAP NO. 12											0.36	40	
2023CPT.10.13.20901	Union	13	SR 2912 GOOSE POND COVE / ROUTE ID 40002912090	FROM SR 2911 SANDY POND ROAD TO CUL DE SAC <u>MILEPOST 0-0.11</u>	2	2	2WU	0.11	21		*		
TOTAL FOR MAP NO. 13											0.11		
TOTAL FOR PROJ NO. 2023CPT.10.13.20901											5.56	400.0	1.0
GRAND TOTAL											5.56	400.0	1.0